



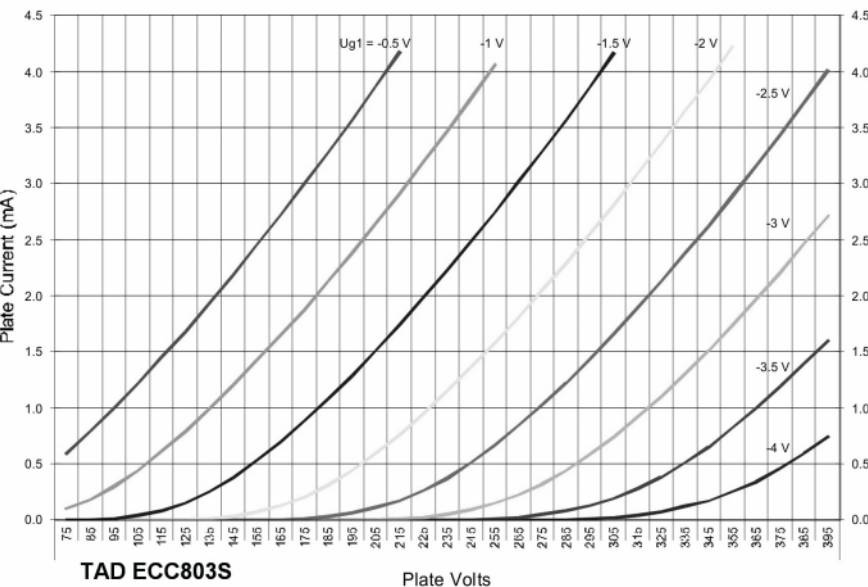
**TAD ECC803S Premium Select**  
High-Mu Twin Triode

The **TAD™ ECC803S**: A long-plate ECC83 / 12AX7A in the good tradition of the famous Telefunken ECC803S. 1dB less Gain than the RT003 (ECC83-Cz) but much better details and definition and less compression, close to the RT001 (12AX7A) makes it a ideal choice for HiFi. With balanced systems

**Characteristics of a bogey tube:**

Electrical		
Heater:	Series	Parallel
Voltage (AC or DC)	12.6V +/-1.0	6.3+/-0.5
Current	0.15	0.3
Heating		Indirect
Cathode-to-heater potential, max.		150 V
Direct interelectrode capacitances, max.***		
Grid to plate		2.0 pF
Grid to cathode		2.1 pF
Grid to heater		1.2 pF
Plate to cathode		1.0 pF
Mechanical		
Operating Position		Any
Base	E9-1, Small Button 9 Pin	
Dimensions:		
Height		56.3 mm
Seated height		49.2 mm
Diameter		22.2 mm
Cooling		conventional
Approximate net weight		15 g

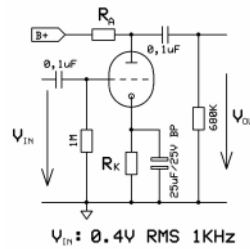
AF Power Amplifier	
Maximum ratings	
DC plate voltage	330 V
Positive DC Grid Voltage	0 V
Negative DC Grid Voltage	-55 V
Plate dissipation	1.2 W
Bulb temperature (surface hottest point)	160°C
Cathode Current	8 mA



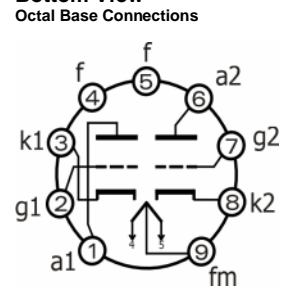
**RT033, ECC803S**

B+ / V	R <sub>A</sub> / kΩ	R <sub>K</sub> / kΩ	V <sub>Out</sub> / V <sub>RMS</sub>	V <sub>Out</sub> / V <sub>IN</sub>	THD / %	I <sub>A</sub> / mA
200	47	1,50	15,4	38,5	4,1	0,8
250	47	1,20	16,8	42,0	2,7	1,1
300	47	1,00	17,8	44,5	1,9	1,5
350	47	0,82	18,8	47,0	1,5	2,0
400	47	0,68	19,2	48,0	1,2	2,4
200	100	1,80	20,2	50,5	4,0	0,6
250	100	1,50	21,7	54,3	2,7	0,8
300	100	1,20	22,7	56,8	1,8	1,1
350	100	1,00	23,6	59,0	1,2	1,4
400	100	0,82	24,3	60,8	1,0	1,7
200	220	2,70	22,7	56,8	4,7	0,3
250	220	2,20	24,6	61,5	2,9	0,5
300	220	1,50	26,1	65,3	2,0	0,7
350	220	1,20	27,0	67,5	1,4	0,9
400	220	1,00	27,7	69,3	1,1	1,0

**Test arrangement:**



**Bottom View**



**Outline View**

